

Understanding the TurboFLOORPLAN Catalog

Overview

For ease of use TurboFLOORPLAN has organized the Master Catalog into three levels:

- Tool Group (e.g. Furniture)
- Element Type (e.g. Living Room Furniture)
- Element (e.g. Sofa).

As you select a Tab, a specific group of tools will appear. For example under the Interiors tab there is a Furniture tool icon. The corresponding Element Type and Element are displayed in the Catalog Panel at the right of the screen as you choose different Insertion tools from the tabs.

Elements inserted into a model are saved with the project as an internal catalog so you can share files without having to share catalogs. Elements modified within the project do not affect the Master Catalog. You can however, add these customized elements to the Master Catalog so future projects can use the customized element.

Creating a New Catalog:

When you first start a new drawing in TurboFLOORPLAN you are using elements from the Master Catalog. As you import new blocks or change the existing elements, at the Master Catalog level, you may want to create a new custom catalog as not to affect the original database.

Creating a New Catalog:

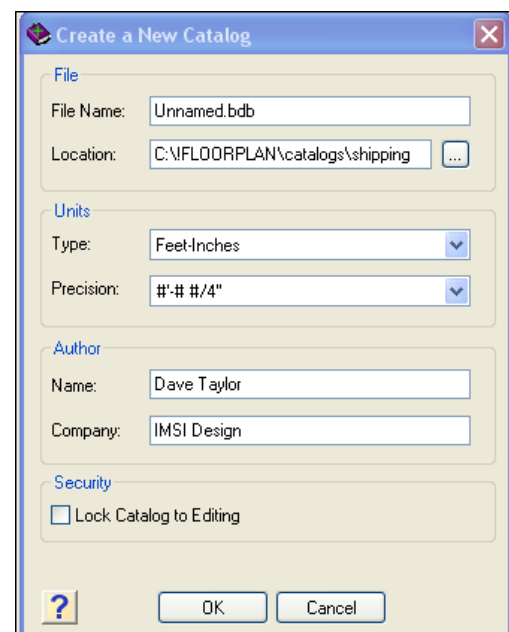
1. Select **File|Catalogs| Catalog Manager**
2. In the **Catalog Manager** dialog box, select **File|New Catalog**.
3. The **Create A New Catalog** dialog box will appear. Specify a name for your new catalog by typing it in the edit box beside File Name.

Note: In this dialog box, you can also specify a directory to save the file, the units of measurement for the database and the precision of accuracy when inserting elements.

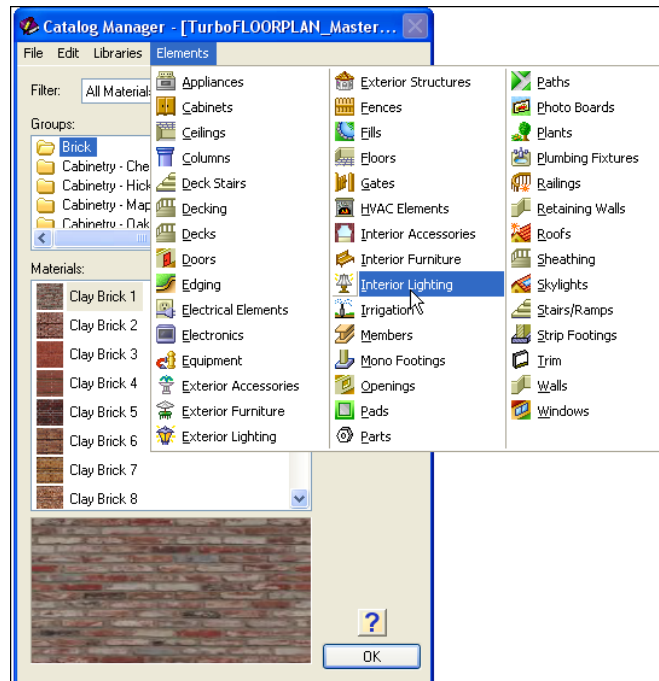
4. Once you have all of the information completed click OK.
5. The **Catalog Manager** dialog box will appear, click the Expand button.
6. The dialog box will enlarge, click on the Other button, which will allow you to display the contents of another database in the new panes revealed.

7. In the **Open** dialog box, choose the Master Catalog.bdb file and click Open.

8. The Group *Element* at the top of the dialog box will reflect the elements displayed in the element and type lists below. You can highlight an element from the Master Catalog list and click on *Import Item* to



bring in individual elements or click on *Import All* to bring in the entire contents of the Group element list. Repeat this process for all Groups until you have all of the elements required for the new catalog.



9. Click OK once you have all of the elements required in the new database. TurboFLOORPLAN will then begin to use the new catalog that you have created.

Using different catalogs:

Note: TurboFLOORPLAN PRO users can find additional Element Catalogs *.bdb files in the ...\\Disk2\\Element Catalogs\\ folder of the DVD. These were produced separately to keep the overall size of the master catalog database down size in order to ensure better product performance.

If you are opening a model drawn with a previous database you can also open the database if it was saved.

To Use a different catalog:

1. Select **File|Catalogs| Open Catalog**
2. In the **Open** dialog box, choose the desired Catalog (bdb) file and click Open.

Adding Elements to a Catalog

To add an element to the Master Catalog:

You can add elements to a database two different ways.

If you have customized the properties of an element inserted into a drawing and want to add it to the database for future use.

1. Select **File|Catalogs|Save Elements to Catalog**.
2. Click on the element in the drawing that you want to save to the current catalog.

3. Click Yes to add the element to your catalog.

Note: It will have the same name as it was originally inserted, but you can click on it in the Catalog Panel, right click and choose Catalog Manager. Once in the Catalog Manager dialog box you can highlight the element, right click and choose Properties. Change the name listed in the dialog box and click OK.

If you have 3DS block files they can also be imported into the catalog.

1. Select **File**|Catalog|Catalog Manager.

2. In the **Catalog Manager** dialog box, set the Element at the top of the dialog box to Furniture.

3. Select **Edit**|Add Element.

4. The **Define Element** dialog box will appear. Choose the *Import geometry from file* option and click OK.

5. Locate the .3ds file on your hard drive and click Open to add it to the current catalog.

Note: some of the templates for the Catalog groups such as cabinets will not let you import geometry this way, so you may want to add those elements to a different group.